



ANNUAL REPORT

2024

MISSION STATEMENT

The Mission of the Health and Educational Facilities Authority of the State of Missouri is to provide access to the capital markets in an effort to lower the cost of health and educational services in Missouri by providing high quality, readily available, low cost financing alternatives for Missouri public and private, nonprofit health and educational institutions.



COXHEALTH

The Health and Educational Facilities Authority of the State of Missouri, created by an Act of the Missouri General Assembly and operational in 1979, is empowered to make loans to any participating health or educational institution and to refund outstanding obligations, mortgages or advances issued, made or given for the cost of facilities.

The Authority is self-funded, has no taxing power and receives no financial support or appropriations from the State.

The Authority assists not-for-profit institutions in borrowing funds at the lowest possible cost to provide quality medical and educational services to Missouri residents. Interest paid on Authority bonds and notes is exempt from federal and Missouri state income taxation, resulting in materially lower interest rates for substantial savings on financing cost.

Many types of health care and educational institutions across the state receive financing assistance from the Authority. Health care financings have been arranged for health facilities ranging from fewer than 100 to over 1,000 beds, including acute and primary care facilities, teaching and research centers, osteopathic hospitals,

retirement and nursing homes, specialized care centers and alcoholic rehabilitation treatment centers. Educational financings include public universities, liberal arts colleges, major research universities and medical schools, institutions of specialized instruction, public school districts, private elementary and secondary schools and charter schools.

During 1995, the Authority developed the guidelines for, and became administrator of, the Direct Deposit Program, which provides strong credit ratings for Missouri school districts. The Authority also initiated the HELP Program, which provides low interest loans to small and/or rural health care and educational facilities.

The Authority's bonds and notes do not constitute a debt or liability of the State of Missouri or of any political subdivision thereof, within the meaning of any State constitutional provision or statutory limitation. The Authority has no taxing power. The credit supporting any Authority note or bond issue is the credit of the individual borrowing institutions. The bonds and notes are limited obligations of the Authority payable solely from payments

made by the borrowing institution.

The validity of the Authority's Act was upheld by the Missouri Supreme Court in *Menorah Medical Center vs. Health and Educational Facilities Authority of the State of Missouri* 584 S. W. 2d 73 (MO 1979).

AUTHORITY MEMBERSHIP

The Act provides for seven members appointed by the Governor of the State of Missouri, with the advice and consent of the Senate. Each member must be a resident of the State and no more than four members may be of the same political party. Members are appointed for five year terms. Members continue to serve after expiration of their term until a successor is appointed or they are reappointed.

AUTHORITY REPRESENTATIVES

Michael J. Stanard

Executive Director

Vincent M. Loretta

Assistant Director

JoAnne L. Allison

Administrative Assistant

Thompson Coburn LLP

General Counsel

Columbia Capital Management, LLC

Financial Advisor

THE AUTHORITY1

CHAIR’S LETTER (BY ROBERT D. DOBSCH) 3

AUTHORITY MEMBERS 4-5

FINANCING OPTIONS..... 6

PROGRAMS AND IMPACT ON
MISSOURI ECONOMY 7

CITIES AND INSTITUTIONS 8-10

CUMULATIVE SUMMARY OF FINANCINGS..... 12-13

PROJECTS FINANCED 14-21

HELP! PROGRAM - DIRECT LOANS 22-23



It is a pleasure to present the 2024 Annual Report of the Health and Educational Facilities Authority of the State of Missouri (MoHEFA). My fellow Members and I are proud to serve on the Board and work with MoHEFA's dedicated staff and advisors to provide accessible, lower-cost financing for a broad spectrum of Missouri's health and educational institutions. On behalf of the Members, I would like to thank Mr. Michael E. Henze for his four years of service to the Authority and wish him well in his retirement from the Board in early 2024. We are equally pleased to welcome Mr. Paul Ogier, who joined the Board in early 2025.

2024 presented continued challenges for participants in the public finance markets. The shifting interest rate environment and lingering post-pandemic factors kept markets and projects in a state of uncertainty. Later in the year, the future of the Federal tax-exemption on private activity bonds was once again called into question as it was in 2017. Reports and opinions regarding the renewal of the 2017 Federal tax legislation raised concerns about the potential curtailment or elimination of tax-exempt bonds, along with numerous other budgetary considerations. As we move into 2025, these discussions are expected to continue in Congress. As in 2017, the borrower and public finance communities are working diligently to underscore the continued importance of this lower-cost financing tool in supporting essential services in Missouri and across the United States.

Despite the market headwinds, 2024 was a successful, but lower volume, year for MoHEFA in terms of providing financing options for Missouri's health and education institutions. The Authority completed four bond issues totaling over \$319 million, which is below the ten-year average both in dollars and the number of financings. However, early signs point to increased activity as we move into 2025.

The Authority is proud of the widespread use of its bonds, notes, and direct loans across every corner of Missouri. The Missouri Primary Care Association in Jefferson City is the latest new borrowers to take advantage of MoHEFA's financing options. In addition, the HELP! Program added four new loans during the year. This program supports small, direct loans to smaller borrowers providing them with a simple loan process, with maximum terms of ten years and \$500,000.

For over 45 years, MoHEFA has been serving Missouri's fine health and educational institutions, regardless of size, mission, or location. The Members of the Authority Board, Authority staff, and our professional advisors are proud of this legacy and look forward to continuing to offer cost-effective, efficient, and accessible financing options to fund crucial projects throughout our State.

Robert D. Dobsch
Chair of the Authority



Missouri Primary Care Association (under construction)

ROBERT D. (BOB) DOBSCH - CHAIR & MEMBER

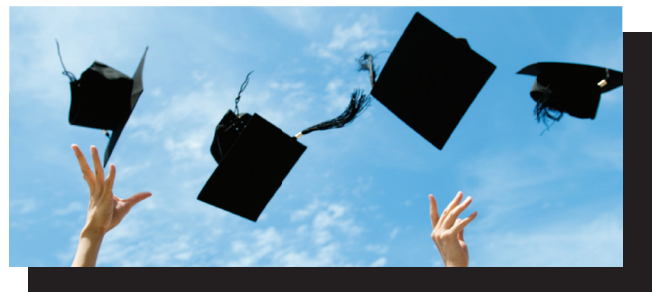
Mr. Dobsch, Mr. Dobsch, a lifelong resident of Washington, Missouri, is the founder, President and CEO of Bank of Franklin County. Bob earned an associate's degree in Business Administration and went on to graduate from the University of Missouri with a bachelor's degree in Political Science with an emphasis in Public Administration/Public Finance. After working for Mercantile Bank for 21 years, Bob raised \$4.5 million in capital funds for Franklin Bancorp, Inc., formed the first Board of Directors for Bank of Franklin County, and chartered the De Novo bank in 2000. His leadership has led the Bank to grow total assets to over \$325 million, operate 5 locations and form a subsidiary, Missouri Valley Wealth Management. He has served on numerous civic and community groups including; Washington Area Highway Transportation Committee, Tax Increment Financing Commission, Comprehensive Plan Steering Committee, Union Area Chamber of Commerce, East Central College Foundation Board, Chairman of the Washington Town and Country Fair and Chairman of the Washington Historical Society Finance Committee. He served as President of Our Lady of Lourdes Parish Council as well as serving on their major gifts campaign committee. He then went on to work on the major gifts campaigns for St. Francis Borgia Regional High School and the Washington Historical Society's Share Washington's Heritage campaign. Bob is currently the President of the Washington Civic Industrial Board where he also acts as Treasurer, and Treasurer of the Washington Industrial Development Authority. He is on the Board of Washington 353 Redevelopment and the Public Facilities Committee, a member of the St. Louis Archdiocese Pastoral Council and a member of the Washington Lions, Elks and Knights of Columbus organizations. Term as a Member expires July 30, 2027.

**WILLIAM E. EKEY - VICE CHAIR & MEMBER**

Mr. Ekey, William E. (Bill) Ekey, a resident of Odessa, Missouri, spent 35 of his 39-year professional career with the Commerce Trust Company, a division of Commerce Bank. While at Commerce he rose from the rank of Assistant Vice President to Senior Vice President and Director of Corporate Trust. He successfully guided the growth of the department from under \$2 billion municipal debt to almost \$15 billion while also promoting a corresponding increase in revenue and profitability. He was



able to expand the Company's service area that was centered primarily in Missouri to providing services to cities, states and other political subdivisions throughout the United States. After a strategic change in direction by Commerce, Bill was instrumental in guiding the successful transfer of Commerce's Corporate Trust portfolio of business to UMB Financial Corporation in early 2020. He finished out his career at UMB, where he helped his former staff integrate their accounts into UMB's system. After seeing the transition run smoothly for each of the involved banks, the staff and their customers, Bill retired in August 2020. Prior to joining Commerce, Bill was a Corporate Trust Officer at Security National Bank in Kansas City, Kansas. After spending two years there, he took advantage of an opportunity to manage a small Corporate Trust Department at the newly formed Bank of Kansas City. These experiences provided him a firm foundation for the move to Commerce. Bill received his Bachelor of Arts degree from the University of Kansas. He went on to earn his law degree from the Washburn University of Topeka School of Law. He was admitted to practice law in the State of Kansas. Additional professional education included earning a designation of Certified Corporate Trust Specialist from the Cannon Financial Institute and an employee benefit plan design certificate from Booke and Associates. He has been a life-long member of Ducks Unlimited, serving as area chairman in Kansas City for eight years. He is the recipient of the Greater Kansas City Committee's prestigious Preston Williams Conservation Award. He continues his involvement as a committee member of the Odessa, Missouri Ducks Unlimited Chapter. He is also a member of the National Rifle Association and the Pioneer Gun Club, where he is a member of the Club's audit committee. Bill is an avid hunter, pursuing ducks, upland game and deer. He is also loves to play golf, but mastering the game continues to elude him. Bill and his wife, Betty, are members of Timothy Lutheran Church in Blue Springs, Missouri. He has served on the Church's stewardship committee and on the Church's financial advisory committee. Bill and Betty have six children and five grandchildren. Term as a Member expires July 30, 2028.



JOSEPH A. CAVATO - TREASURER & MEMBER

Mr. Cavato, a resident of University City, Missouri is the principal and owner of JAC Consulting, LLC, providing consulting and advisory services to local governments, non-profit agencies and real estate development entities. Services include program management, real estate and development planning, project management, financial advisory and intergovernmental relations. In addition to his long professional career in government and finance, Mr. Cavato has been very active in the community as an advisor, volunteer and board member of a number of educational, non-profit, religious and governmental entities. He has served as a board member of Cardinal Ritter College Prep High School, Barat Academy, Beyond Housing, the Missouri Workforce Housing Association and the Saint Louis University Urban Planning and Real Estate Development Program. Term as a Member expired July 30, 2013.

**THOMAS E. GEORGE - MEMBER**

Mr. George, a resident of St. Louis, Missouri is the retired President of the International Brotherhood of Electrical Workers (IBEW) Local One in St. Louis. Prior to serving as President since 1998 he served various other roles for Local One including Registrar, Instructor, Business Agent, Organizer and as Trustee for several different funds. He is a lifelong Journeyman Wireman. In addition to his professional career, Mr. George was elected to four terms as a Member of the Missouri House of Representatives from the 74th district representing a portion of north St. Louis County. He was Chairman or Vice Chairman of the Labor Committee, Workforce Development and Workplace Safety Committee and the Municipal Corporation Committee. His other committee memberships included Missouri Job Training Legislative Oversight; Local Government; Appropriation - Natural and Economic Resources; Insurance; Communications, Energy and Technology; and Employment Security and Unemployment Benefits Workers Compensation. He has been honored as the Thomas F. Eagleton Grassroots Democrat of the Year. Mr. George also served six years with the 138th Infantry of the Missouri National Guard. Term as a Member expired July 30, 2015.

**PAUL OGIER - MEMBER**

Mr. Ogier, a resident of St. Louis, Missouri is the retired long-time Chief Financial Officer of Lutheran Senior Services in Brentwood, Missouri. He currently serves part time as Chief Financial Officer of the Carmelite Sisters of the Divine Heart of Jesus, a provider of long term care services. Mr. Ogier has a B.S. Degree in Finance from Missouri State University and is a Certified Public Accountant (CPA). His professional career began in 1980 as a consultant with Laventhol & Horwath, a national accounting firm. His work consisted primarily of providing financial and operational consulting services to senior housing, and advanced to be the Practice Manager for the Midwest for Senior Housing. Mr. Ogier left Laventhol and Horwath in 1986 and became the co-founder and President of Provident Group, a full-service management and development company in the senior housing industry. Provident Group grew to manage 12 Assisted Living communities located in the Midwest. Provident Group became a subsidiary of Lutheran Senior Services (LSS) in June 2001. Mr. Ogier served LSS as Vice President of Development and Other Services until he was named Chief Financial Officer in 2006. Effective April 2020, Mr. Ogier served as a Senior Advisor to LSS until his retirement on December 31, 2021. He has a vast knowledge of development, operations, and financing, with a special emphasis on project financing. Mr. Ogier has been a leader in the senior housing industry for over 40 years. At the time that Mr. Ogier retired, Lutheran Senior Services served approximately 4,000 residents in 9 Life Plan Communities and approximately 800 residents in 12 Affordable Housing Communities in addition to a wide array of Community Based Services. Mr. Ogier continues to provide limited consulting services to not for profits in the senior housing industry. He has been actively engaged in industry and community and served in the following positions: Board member of Leading Age Missouri (until September 2022) and chair of the advocacy committee; Board member of Missouri Health Care Association (until December 2021); Board member and Treasurer of the Nursing Facilities Agent Corporation (until June 2023); and Board member and treasurer for Trinity Lutheran Church in Town and Country MO. (term expires July 30, 2029).



The Authority assists health care and educational institutions in financing equipment purchases and capital projects at the lowest possible cost. Financing options that the Authority offers to Missouri institutions consist of the following debt instruments:

VARIABLE FLOATING RATE BONDS

While these instruments have a nominal long-term maturity, the interest rate is adjusted periodically (usually daily or weekly). The borrower is able to take advantage of low short-term rates, but also, if conditions warrant, to lock in a fixed interest rate without many of the costs associated with a new issuance of bonds.

FIXED RATE SHORT TO INTERMEDIATE TERM BONDS

A variation of traditional fixed rate long-term bonds, these fully amortized bonds are for borrowers who desire shorter prepayment provisions and can generate sufficient revenues to retire the principal over a shorter maturity. The bonds are generally issued for periods ranging from 10-15 years, with a 5-8 year prepayment provision.

FIXED RATE LONG-TERM BONDS

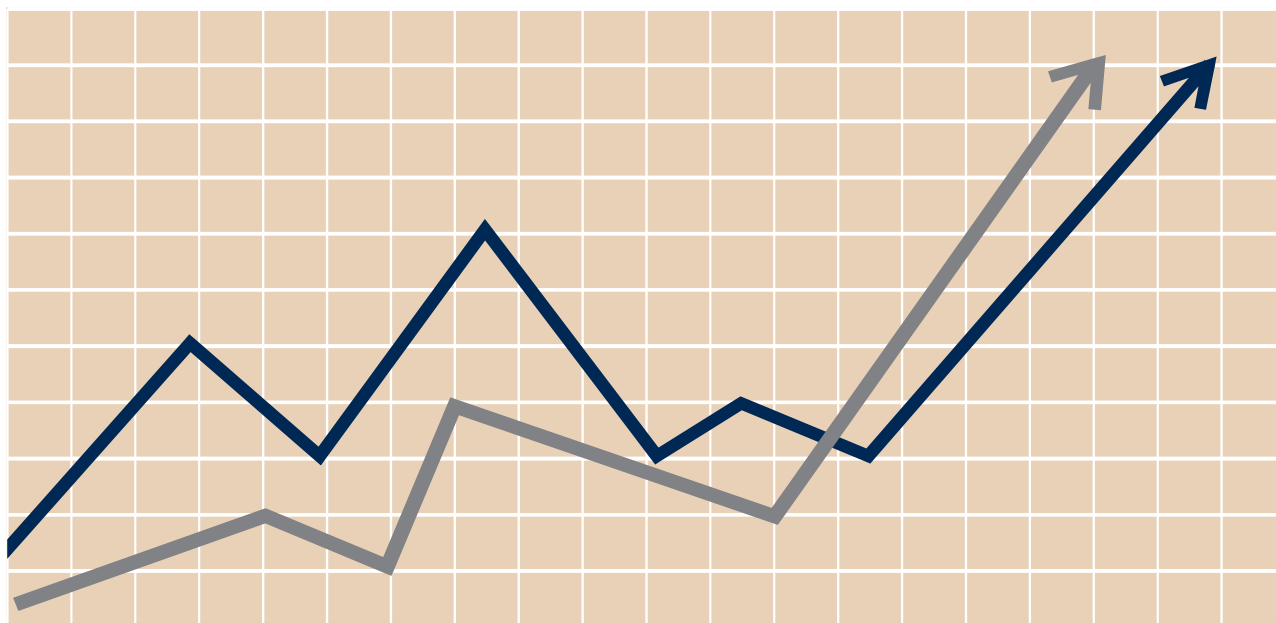
These traditional 20 to 60 year fully amortized term bonds are issued at prevailing market rates. This type of instrument offers the security of fixed rates and the opportunity to stabilize interest costs in a volatile market while matching a longer term liability with the expected useful life of the asset.

FLOATING OR FIXED RATE NOTES

The interest rate on these one to two year notes either floats, with the rate adjusted periodically, or is fixed for its term. The borrower is able to take advantage of lower interest rates while planning long-term financing according to projected needs.

REFUNDING OF PRIOR DEBT

Health care and educational institutions often refinance to take advantage of lower interest rates in the market place than existed at the time of prior financing. Similarly, such institutions often wish to avoid restrictive covenants or collateral requirements contained in a prior financing that would no longer be necessary in a new financing. The Authority has the ability to issue "current refunding bonds" which can accomplish these goals. Such bonds often can be issued to refund the institution's obligations even if the Authority was not involved in the original financing. Current refunding depends on the terms of the prior financing, current market conditions, existing bond holders and timing, and require that the prior bonds be redeemed within 90 days of issuance of the new bonds.



MISSOURI SCHOOL DISTRICT ADVANCE FUNDING PROGRAM

In 1985 the Authority and the Missouri School Boards Association established the Missouri School District Advance Funding Program to provide the lowest cost financing available for Missouri school districts and public community junior colleges to fund any cash flow deficits that might occur in their various funds during the fiscal year. Some of the advantages of participating in the program include low borrowing rates, high investment rates, costs of issuance shared by all participants and easy access to funds. Since 1985, almost \$1.18 billion has been loaned to participants under the Advance Funding Program.

HELP! PROGRAM

The Authority, recognizing the difficulty that small providers of health care and educational services experience obtaining adequate financing for their capital needs, in 1995 created the HELP! Program to provide these organizations access to low cost loans. Through the HELP! Program, the Authority loans up to \$500,000 for a maximum of ten years at attractive interest rates to small health care and educational providers. 66 institutions have taken advantage of the benefits of this program for a total of almost \$22 million in loans.

HIGHER EDUCATION WORKING CAPITAL LOAN PROGRAM

During 1997, the Authority established the Higher Education Working Capital Loan Program to help alleviate cash flow difficulties that are typically experienced during part of each fiscal year by higher educational institutions. The Program allows participating institutions to borrow money under an advance funding agreement to provide funds during that portion of its current fiscal year when funds are not yet on hand to pay expenses as incurred.

As of December 31, 2024, \$243.2 million of notes have been issued under this program.

DIRECT DEPOSIT PROGRAM

In 1995, the Missouri Legislature adopted Senate Bill No. 301 which sets forth the development of a program to assist Missouri school districts with their financing needs. The Direct Deposit Program, administered by the Authority, provides a major benefit to school districts issuing general obligation bonds.

In an effort to improve the credit quality of all school districts in Missouri, the Program, effectively, provides for credit enhancement by authorizing the direct deposit, by the State of Missouri to a bank serving as trustee, of a portion of state aid payments that would otherwise be paid directly to the involved school district. The direct deposit amount is equal to debt service on the school district bonds. This procedure results in a credit rating in the second highest rating category (i.e. "AA+"), resulting in attractive interest rates on the bonds at no additional cost to the participating district.

As of June 30, 2024, a total of 3,215 financings have been processed through the program, representing \$20.2 billion of bonds issued benefiting school districts in all Missouri counties and the City of St. Louis.

IMPACT ON MISSOURI ECONOMY

A Study recently was completed by IHS Markit Economics as to the economic impact of MoHEFA's bonds on Missouri's economy in terms of jobs, construction, purchasing, utilities and other matters. The Study considered the recent ten year period and determined the following:

- MoHEFA issued \$5.62 billion (\$562 million annually) in new financing for construction and capital projects for health and educational facilities throughout Missouri
- These financings boosted the labor market growth and supported 6691 jobs annually with wages above the State average
- Similarly, MoHEFA financings in that period supported \$362 million in labor and \$473 million in GDP annually
- Additionally, during MoHEFA's early history, 1979-2006, bond issuance supported annual totals of 5916 jobs, \$412 million of GDP and \$339 million of labor income
- The projects financed create long term economic value through the health and educational services provided by the institutions thereby increasing the quality of life in Missouri and the competitiveness of the State
- Health and education is the second largest employment sector in Missouri accounting for 16% of the State's employment
- Had these financings not been completed over the last ten years, Missouri could have lost another 2967 construction jobs
- MoHEFA's financing options provide low-cost financing for capital projects when needed most and even in challenging economic times



CITIES & INSTITUTIONS

Aurora

- Mercy Hospital
- Preferred Family Healthcare

Ava

- Deaconess Long Term Care
- Preferred Family Healthcare

Bellevue

- Deaconess Long Term Care

Belton

- Dialysis Clinic, Inc.

Blue Springs

- St. Mary's Medical Center
- Saint Luke's Health System

Bolivar

- Citizens Memorial Healthcare
- CoxHealth
- Preferred Family Healthcare
- Southwest Baptist University

Bonne Terre

- BJC-Parkland Health Center

Boonville

- Dialysis Clinic, Inc.
- Family Health Center
- Kemper Military School and College
- Valley Hope Association

Branson

- Preferred Family Healthcare
- CoxHealth - Skaggs

Brookfield

- Preferred Family Healthcare

Buffalo

- Deaconess Long Term Care

Camdenton

- Preferred Family Healthcare

Cameron

- Cameron Regional Medical Center

Canton

- Culver-Stockton College

Cape Girardeau

- Preferred Family Healthcare
- Saint Francis Medical Center

- Southeast Health
- Southeast Missouri State University

Carthage

- Mercy Hospital

Cassville

- Deaconess Long Term Care

- Mercy Hospital

Chesterfield

- Barat Academy
- Logan College of Chiropractic
- Preferred Family Healthcare
- St. Luke's Episcopal - Presbyterian Hospitals

Chillicothe

- Hedrick Medical Center
- Preferred Family Healthcare

Clinton

- Compass Health
- Dialysis Clinic, Inc.
- LifeFlight Eagle
- Preferred Family Healthcare

Columbia

- Burrell Behavioral Health
- Tolton Regional Catholic High School
- Family Health Center
- Lenoir Retirement Community
- Preferred Family Healthcare
- Woodhaven Learning Center
- Stephens College
- The University of Missouri

Crystal City

- Mercy Jefferson Regional Medical Center

Desloge

- Preferred Family Healthcare

Edina

- Preferred Family Healthcare

Eldorado Springs

- Preferred Family Healthcare

Ellington

- Reynolds County Memorial Hospital

Fairfax

- Community Hospital Association

Farmington

- Mineral Area Regional Medical Center
- BJC - Parkland Health Center

Fayette

- Central Methodist University

Forsyth

- Preferred Family Healthcare

Fulton

- Westminster College
- William Woods University

Hannibal

- Hannibal - LaGrange College
- Preferred Family Healthcare

Harrisonville

- Deaconess Long Term Care
- LifeFlight Eagle
- Preferred Family Healthcare

Hayti

- Pemiscot County Health System

Hermitage

- Ozarks Community Health Center

Hollister

- Advocates for a Healthy Community

Humansville

- Deaconess Long Term Care

Independence

- Children's Mercy Hospital

Jefferson City

- Capital Region Medical Center
- Dialysis Clinic, Inc.
- Missouri Primary Care Association
- Preferred Family Healthcare
- SSM - St. Mary's Health Center

Joplin

- Christian Horizons, Inc.
- Freeman Health System
- Mercy Hospital
- Missouri Southern State University
- Preferred Family Healthcare

CITIES & INSTITUTIONS

Kohoka

- Preferred Family Healthcare

Kansas City Area

- Academie Lafayette
- Avila University
- Baptist Medical Center
- The Barstow School
- Children's Mercy Hospital
- Compass Health
- Coordinated Professional Services
- Crossroads Charter Schools
- Deaconess Long Term Care
- Dialysis Clinic, Inc.
- Health Midwest
- Kansas City Academy
- Kansas City Art Institute
- Kansas City Univ. of Medicine & Biosciences
- LifeFlight Eagle
- Menorah Medical Center
- Mosaic Life Care
- The Pembroke Hill School
- Preferred Family Healthcare
- Rockhurst High School
- Rockhurst University
- Saint Luke's Hospital
- Saint Luke's Northland Hospital
- Saint Luke's Health System
- Sherwood Autism Center
- St. Joseph Health Center
- St. Pius X High School
- Stowers Institute for Medical Research
- Swope Parkway Health Center
- Trinity Lutheran Hospital
- University Health
- The University of Missouri - Kansas City
- YMCA of Greater Kansas City

Kingsville

- Western Johnson County Health Clinic

Kirkville

- Dialysis Clinic, Inc.
- A.T. Still University of Health Sciences
- Northeast Missouri Health Council

- Preferred Family Healthcare

Lake St. Louis

- Preferred Family Healthcare
- SSM - St. Joseph Hospital West

Lebanon

- Laclede County Healthcare Consortium
- Mercy Hospital
- Preferred Family Healthcare

Lee's Summit

- John Knox Village
- Preferred Family Healthcare
- Saint Luke's East Hospital
- St. Michael the Archangel H.S.
- Summit Christian Academy

Lewistown

- Deaconess Long Term Care

Liberty

- Preferred Family Healthcare
- William Jewell College

Linn

- State Technical College of Missouri

Louisiana

- Dialysis Clinic, Inc.

Macon

- Dialysis Clinic, Inc.
- Macon County Samaritan Memorial Hospital

Marshall

- John Fitzgibbon Memorial Hospital
- Missouri Valley College

Maryville

- SSM - St. Francis Hospital

Marshfield

- Deaconess Long Term Care
- Advocates for a Healthy Community

Mexico

- Audrain Medical Center

Moberly

- Preferred Family Healthcare
- Dialysis Clinic, Inc.

Monett

- Cox Health
- Deaconess Long Term Care

Montgomery City

- Preferred Family Healthcare

Mountain View

- Mercy St. Francis Hospital

Neosho

- Freeman Neosho Hospital
- Preferred Family Healthcare

Nevada

- Preferred Family Healthcare

O'Fallon

- BJC - Progress West Health Center
- Living Word Christian School

Osage Beach

- Dialysis Clinic, Inc.
- Lake Regional Health System

Parkville

- Park University

Poplar Bluff

- Preferred Family Healthcare

Potosi

- Deaconess Long Term Care
- Preferred Family Healthcare

Rolla

- Missouri University of Science & Technology
- Preferred Family Healthcare

Salisbury

- Family Health Center

St. Charles

- Campbell Montessori School
- Parkside Meadows
- Preferred Family Healthcare
- SSM-St. Joseph's Medical Center

St. Joseph

- Mosaic Life Care
- Northwest Missouri Health Services
- Preferred Family Healthcare

St. Louis Area

- Ascension Health
- Anheuser Busch Eye Institute
- ARCH - Area Rescue Consortium of Hospitals

CITIES & INSTITUTIONS

- A.T. Still University of Health Sciences
- BJC - Barnes-Jewish Hospital
- BJC - Barnes-Jewish West
- Bethesda Barclay House
- Bethesda Gardens
- Bethesda Health Group
- Bethesda West
- BJC - Health Care
- BJC - Missouri Baptist Medical Center
- John Burroughs School
- SSM - Cardinal Glennon Children's Hospital
- Central Institute for the Deaf
- Christian Brothers College High School
- Christian Horizons, Inc.
- BJC - Christian Hospitals
- City Academy
- Clayton Academy
- The Community School
- Deaconess Health Services
- SSM-DePaul Health Center
- DeSmet Jesuit High School
- Family Care Health Centers
- Fontbonne University
- Forsyth School
- Incarnate Word Hospital
- KIPP-St. Louis
- Lutheran Church Extension Fund
- Lutheran High School Association
- Ever True
- Mary Institute & St. Louis Country Day Sch.
- Maryville University
- Mercy Health
- Mercy Hospital
- Mercy South
- Miriam School and Foundation
- Missouri Baptist University
- Mother of Good Counsel Home
- National Benevolent Association
- Preferred Family Healthcare
- Ranken Technical College
- Saint Louis Priory School
- Saint Louis University

- St. Alexius Hospital
- St. Anthony's Medical Center
- SSM-St. Clare Health Center
- SSM-St. Joseph Kirkwood
- St. Louis Charter School
- BJC-St. Louis Children's Hospital
- St. Louis University High School
- St. Luke's Episcopal - Presbyterian South
- SSM - St. Mary's Health Center
- SSM Health Care
- The University of Missouri - St. Louis
- The Visitation Academy
- The Washington University
- University of Health Sciences & Pharmacy in St. Louis
- Webster University

St. Peters

- BJC-Barnes-Jewish St. Peters
- Compass Health
- Lutheran H.S. of St. Charles County
- Preferred Family Healthcare

St. Robert

- Preferred Family Healthcare

Sedalia

- Katy Trail Community Health
- Preferred Family Healthcare

Sikeston

- Missouri Delta Medical Center

Smithville

- Saint Luke's Northland Hospital

Springfield

- Advocates for a Healthy Community
- Assemblies of God Financial Services Group
- Burrell Behavioral Health
- CoxHealth
- Drury University
- Evangel University
- Forest Institute of Professional Psychology
- Mercy Hospital
- Missouri State University

- Preferred Family Healthcare

Sweet Springs

- I-70 Community Hospital

Sullivan

- BJC - Missouri Baptist Hospital

Trenton

- LifeFlight Eagle
- North Central Missouri College
- Preferred Family Healthcare
- Saint Luke's Wright Memorial Hospital

Troy

- Preferred Family Healthcare

Union

- Preferred Family Healthcare

Unionville

- Putnam County Memorial Hospital

Versailles

- Katy Trail Community Health

Warrensburg

- University of Central Missouri

Warrenton

- Preferred Family Healthcare

Washington

- Mercy Hospital

Weldon Springs

- Lutheran Church Extension Fund
- Messiah Lutheran School

Wentzville

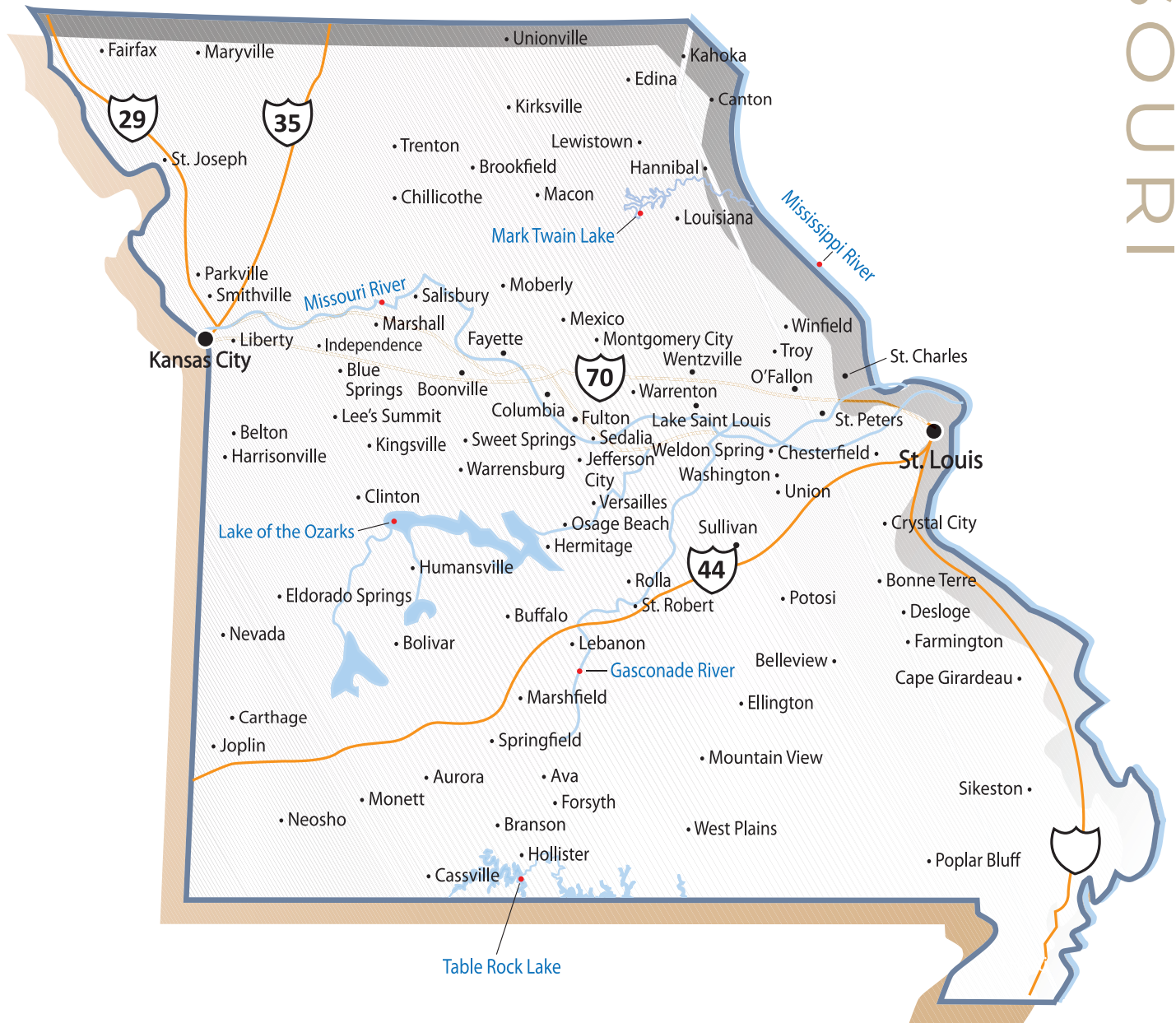
- Compass Health
- Preferred Family Healthcare
- SSM - St. Joseph Health Center

West Plains

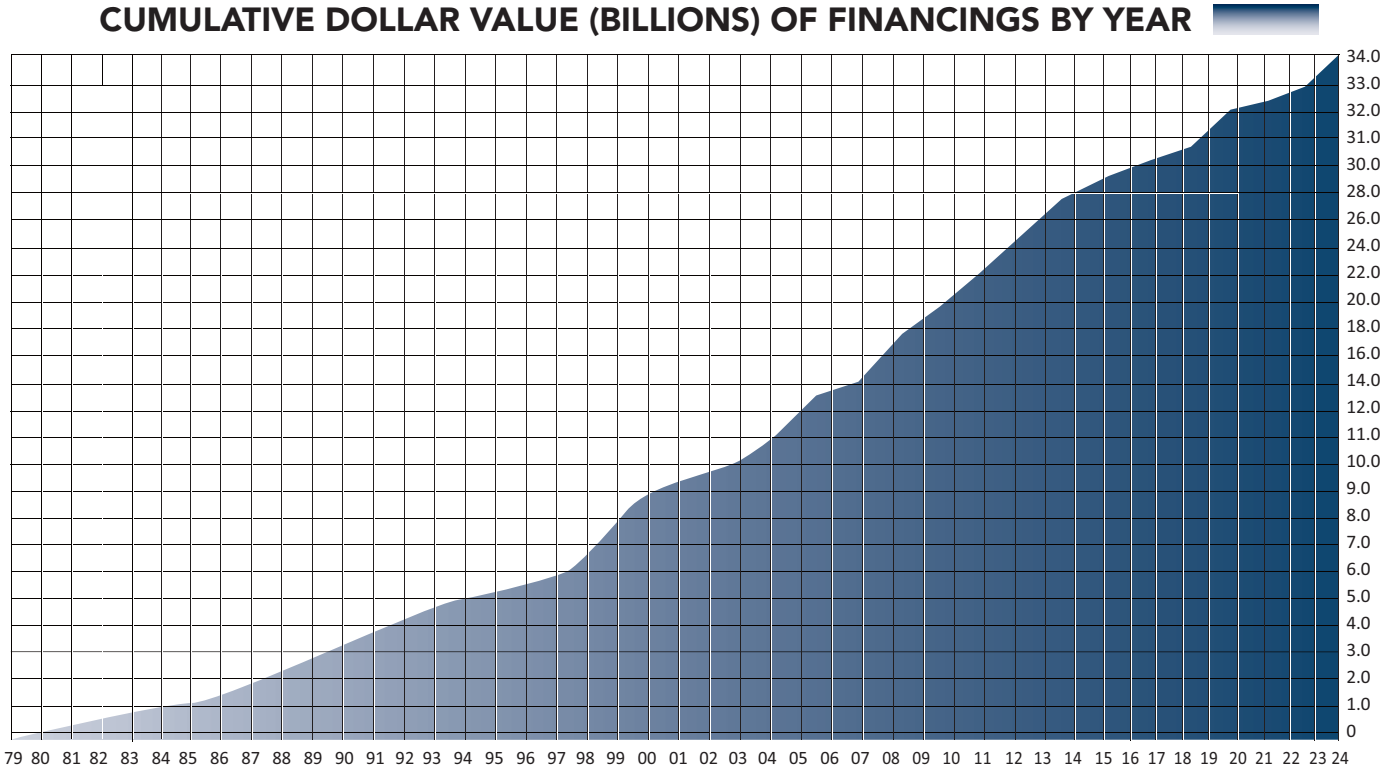
- Dialysis Clinic, Inc.
- Preferred Family Healthcare
- Missouri State University

Winfield

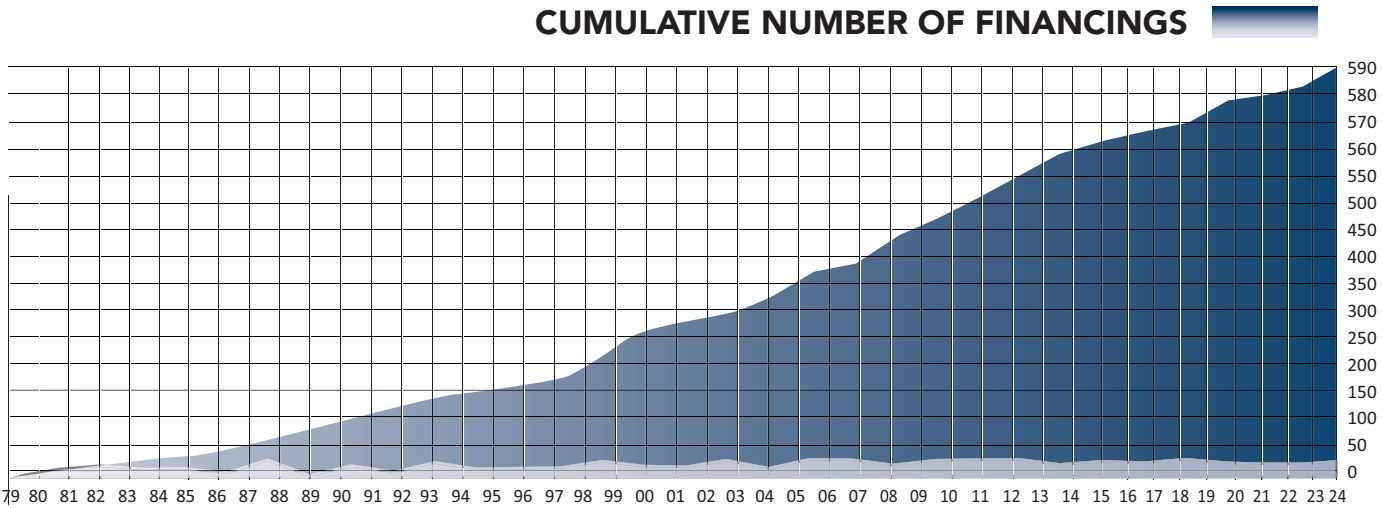
- Preferred Family Healthcare



CUMULATIVE DOLLAR VALUE (BILLIONS) OF FINANCINGS BY YEAR



CUMULATIVE NUMBER OF FINANCINGS



Missouri Primary Care Association

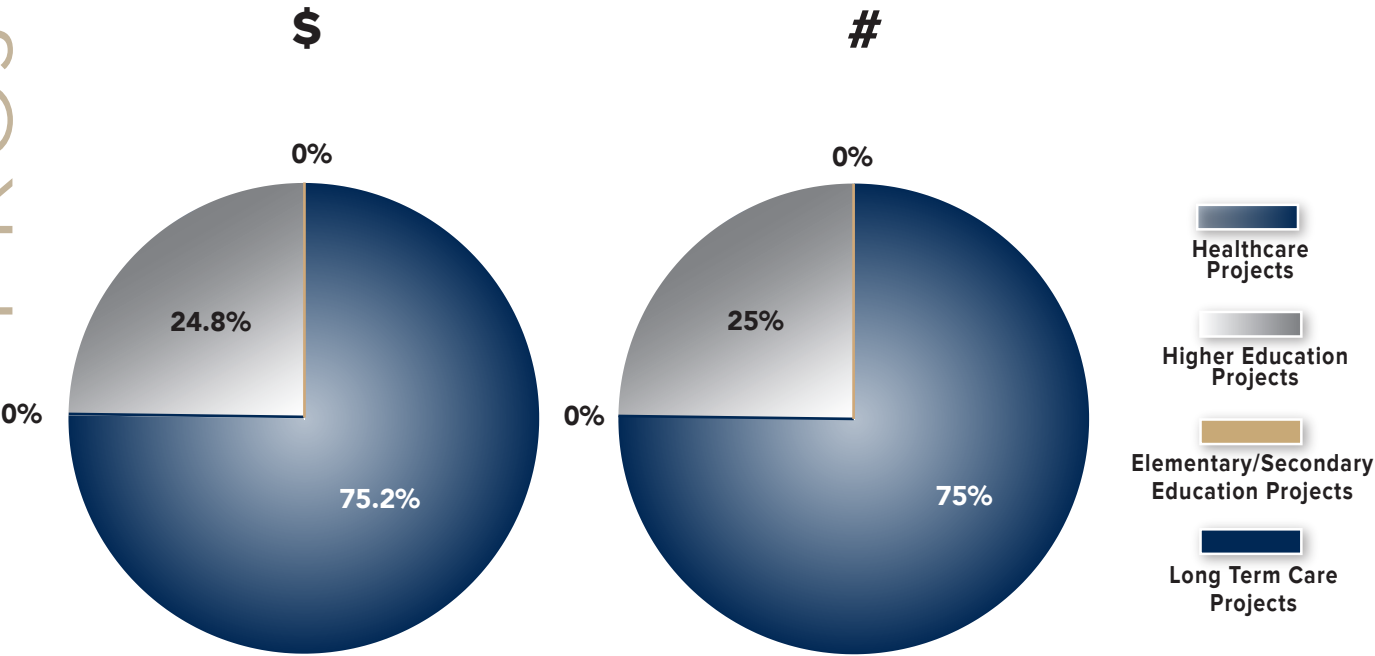
YEAR	#	PUBLIC ISSUE BONDS AMOUNT	#	PRIVATE ISSUE BONDS AMOUNT	#	NOTES AMOUNT	#	TOTAL AMOUNT
1979	1	63,100,000	-	-	1	20,000,000	2	83,100,000
1980	3	112,765,000	2	5,795,000	3	23,245,000	8	141,805,000
1981	4	79,285,000	3	20,350,000	4	94,000,000	11	193,635,000
1982	4	113,935,000	-	-	3	61,000,000	7	174,935,000
1983	4	155,350,000	4	96,110,000	-	-	8	251,460,000
1984	2	34,890,000	2	109,465,000	-	-	4	144,355,000
1985	16	612,625,000	3	23,825,000	1	75,550,000	20	712,000,000
1986	2	32,500,000	-	-	-	-	2	32,500,000
1987	11	417,324,350	1	5,500,000	1	13,515,000	13	436,339,350
1988	6	241,485,000	-	-	1	26,055,000	7	267,540,000
1989	12	521,229,952	1	15,000,000	2	42,920,000	15	579,149,952
1990	8	220,408,035	-	-	2	56,410,000	10	276,818,035
1991	8	285,934,996	3	14,175,000	1	70,200,000	12	370,309,996
1992	11	547,163,306	1	2,500,000	1	76,110,000	13	625,773,306
1993	13	758,002,437	2	1,600,000	1	9,500,000	16	769,102,437
1994	8	355,520,000	2	4,734,257	1	50,010,000	11	410,264,257
1995	6	280,570,000	2	13,588,625	2	74,825,000	10	368,983,625
1996	14	390,595,000	3	9,470,000	1	100,360,000	18	500,425,000
1997	6	91,975,000	-	-	2	100,355,000	8	192,330,000
1998	15	982,127,211	5	24,036,607	2	88,355,000	22	1,094,518,818
1999	16	310,430,000	1	1,341,848	2	64,735,000	19	376,506,848
2000	9	553,785,000	2	8,290,832	2	75,440,000	13	637,515,832
2001	14	1,266,200,000	3	13,035,894	2	75,620,000	19	1,354,855,894
2002	13	497,755,000	3	18,910,498	3	73,625,000	19	590,290,498
2003	16	888,100,000	3	17,347,678	2	111,050,000	21	1,016,497,678
2004	8	428,125,000	3	16,172,244	2	68,525,000	13	512,822,244
2005	13	1,293,390,000	1	6,045,000	2	38,145,000	16	1,337,580,000
2006	9	511,375,000	2	22,000,000	2	31,855,000	13	565,230,000
2007	10	540,565,000	6	34,905,744	2	17,350,000	18	592,820,744
2008	12	1,892,885,000	1	5,475,000	1	6,700,000	14	1,905,060,000
2009	5	384,025,000	6	72,625,000	2	35,895,000	13	492,545,000
2010	6	684,375,000	6	77,510,034	1	9,200,000	13	771,085,034
2011	9	489,635,000	6	607,080,000	1	10,900,000	16	1,107,615,000
2012	8	613,090,000	8	725,430,000	1	7,000,000	17	1,345,520,000
2013	8	574,290,000	11	450,965,945	1	7,500,000	20	1,032,755,945
2014	7	1,756,050,000	7	572,509,500	-	-	14	2,328,559,500
2015	9	612,710,000	11	465,296,000	-	-	20	1,078,006,000
2016	7	1,265,290,000	11	355,035,000	2	46,100,200	20	1,666,425,200
2017	6	930,245,000	11	830,177,000	1	4,692,00	18	1,765,114,000
2018	6	659,045,000	1	6,000,000	0	0	7	665,045,000
2019	12	907,790,000	4	311,195,000	0	0	16	1,218,985,000
2020	5	960,135,000	2	223,500,000	0	0	7	1,183,635,000
2021	4	909,960,000	6	151,201,000	0	0	10	1,061,161,000
2022	3	403,550,000	6	454,970,000	0	0	9	858,520,000
2023	3	741,975,000	2	80,410,000	0	0	5	822,385,000
2024	1	79,235,000	3	239,870,000	0	0	4	319,105,000

TOTAL	373	\$26,450,795,287	160	\$6,113,448,706	58	\$1,666,742,200	591	\$34,230,986,193
-------	-----	------------------	-----	-----------------	----	-----------------	-----	------------------



INSTITUTION 2024	LOCATION	AMOUNT
EverTrue '24A	St. Louis	\$79,235,000
SSM Health '24 A,B	St. Louis	\$198,370,000
Missouri Primary Care Association '24	Jefferson City	\$6,500,000
CoxHealth '24	Springfield	\$35,000,000
TOTAL:		\$319,105,000

	\$ Dollars	# of Issues
Health Care Projects	\$239,870,000	3
Higher Education Projects	\$0	0
Elementary/Secondary Education Projects	\$0	0
Long Term Care Projects	\$79,235,000	1
	\$319,105,000	4



2024 ANNUAL REPORT – PROJECTS FINANCED

2024

INSTITUTION 2023

EverTrue '24A
SSM Health '24 A,B
Missouri Primary Care Association '24
CoxHealth '24

LOCATION	AMOUNT
St. Louis	79,235,000
St. Louis	198,370,000
Jefferson City	6,500,000
Springfield	35,000,000
TOTAL	\$319,105,000

2023

INSTITUTION 2023

Mosaic Health '23 A
SSM Health '23 A,B
BJC HealthCare '23 A
University of Central Missouri '23
Mercy Health '23

LOCATION	AMOUNT
St. Joseph	50,000,000
St. Louis	306,555,000
St. Louis	139,000,000
Warrensburg	30,410,000
St. Louis	296,420,000
TOTAL	\$822,385,000

2022

INSTITUTION 2022

University of Health Sciences & Pharmacy A,B (2023)
Maryville University of Saint Louis
Cameron Regional Medical Center
SSM Health
Logan University
John Burroughs
Compass Health
Missouri State University A
Mercy Health A,B,C,D,E,F

LOCATION	AMOUNT
St. Louis	80,640,000
St. Louis	10,840,000
Cameron	5,615,000
St. Louis	312,070,000
Chesterfield	22,500,000
St. Louis	15,025,000
Wentzville	23,300,000
Springfield	13,590,000
St. Louis	374,940,000
TOTAL	\$858,520,000

2021

INSTITUTION 2021

Preferred Family Healthcare
BJC Health System A,B,C
Missouri State University A
Bethesda Health
State Technical College of Missouri
Mercy Health A,B
Missouri State University B
Lake Regional Health System
William Jewell College
EverTrue

LOCATION	AMOUNT
Chesterfield	20,400,000
St. Louis	796,120,000
Springfield	14,080,000
St. Louis	19,495,000
Linn	13,371,000
St. Louis	76,390,000
Springfield	17,710,000
Osage Beach	51,400,000
Liberty	9,250,000
St. Louis	42,945,000
TOTAL	\$1,061,161,000

2020

INSTITUTION 2020

The Washington University A
Maryville University A
BJC Health System A,B
Compass Health
Mercy Health
Saint Luke's Health System
Capital Region Medical Center

LOCATION	AMOUNT
St. Louis	450,000,000
St. Louis	9,330,000
St. Louis	200,000,000
Wentzville	23,500,000
St. Louis	378,500,000
Kansas City	93,650,000
Jefferson City	28,585,000
TOTAL	\$1,183,635,000

2019

INSTITUTION 2019

Missouri State University A
Maryville University A
Avila University
EverTrue A,B
Saint Louis University A,B
Children's Mercy Hospital A,B
CoxHealth A
Mosaic Health System A
St. Luke's Episcopal-Presbyterian Hospitals
SSM Health A,B,C
Southeast Missouri State University
EverTrue C
A.T. Still University of Health Sciences A,B
Missouri State University B
Saint Luke's Wright Memorial Hospital
Lake Regional Health System

LOCATION	AMOUNT
Springfield	15,730,000
St. Louis	14,525,000
Kansas City	13,425,000
St. Louis	92,370,000
St. Louis	144,365,000
Kansas City	42,690,000
Springfield	120,260,000
St. Joseph	228,975,000
Chesterfield	51,860,000
St. Louis	239,340,000
Cape Girardeau	44,595,000
St. Louis	123,915,000
Kirksville	52,420,000
Springfield	19,725,000
Trenton	19,725,000
Osage Beach	8,000,000
TOTAL	\$1,218,985,000

2018

INSTITUTION 2018

SSM Health A, C, D, E,
Saint Luke's Health System A
Kansas City Art Institute
University of Central Missouri A, B
Mercy Health A
Crossroads Charter Schools A, B
Christian Horizons, Inc.

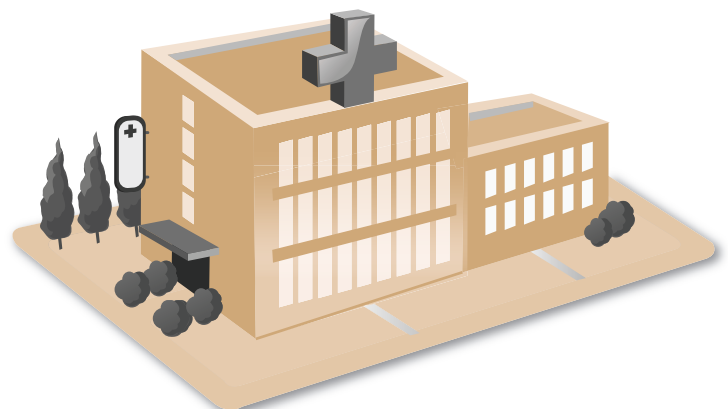
LOCATION	AMOUNT
St. Louis	276,575,000
Kansas City	98,160,000
Kansas City	22,085,000
Warrensburg	10,745,000
St. Louis	222,115,000
Kansas City	6,000,000
St. Louis	29,365,000
TOTAL	\$665,045,000

2017

INSTITUTION 2017

Kansas City University of
Medicine and Biosciences
Rockhurst High School A,B,C
Saint Louis University A
Capital Region Medical Center
Missouri Southern State University
State Technical College of Missouri
Mercy Health A,B
Webster University
BJC Health Care A,B, C
Washington University A
Cox Health
Mercy Health C
DeSmet Jesuit High School
KIPP St. Louis
Children's Mercy Hospital A
BJC Health Care D-I
University Health
Rockhurst University A,B

LOCATION	AMOUNT
Kansas City	18,540,000
Kansas City	10,000,000
St. Louis	76,455,000
Jefferson City	20,000,000
Joplin	5,000,000
Linn	5,100,000
St. Louis	81,790,000
St. Louis	49,690,000
St. Louis	198,000,000
St. Louis	375,000,000
Springfield	4,692,000
St. Louis	284,695,000
St. Louis	9,000,000
St. Louis	11,822,000
Kansas City	125,865,000
St. Louis	400,000,000
Kansas City	70,000,000
Kansas City	19,465,000
TOTAL	\$1,765,114,000



2016

INSTITUTION 2016	LOCATION	AMOUNT
EverTrue, Series A	St. Louis	53,320,000
Washington University, Series A	St. Louis	402,920,000
Saint Luke's Health System	Kansas City	259,430,000
Mary Institute & St. Louis Country Day School	St. Louis	18,000,000
Saint Luke's Health System, Series B	Kansas City	90,000,000
Laclede County Healthcare Consortium	Lebanon	4,135,000
Washington University, Series B	St. Louis	272,750,000
BJC Health Care, Series A	St. Louis	75,000,000
St. Louis University High School	St. Louis	8,010,000
Lake Regional Health System	Osage Beach	17,000,000
Children's Mercy Hospital	Kansas City	131,670,000
Saint Louis University, Series A1,A2	St. Louis	71,930,000
EverTrue, Series B,C	St. Louis	111,200,000
Ranken Technical College	St. Louis	9,500,000
Tolton Regional Catholic High School	Columbia	7,000,000
A.T. Still University of Health Sciences	Kirksville	34,000,000
St. Luke's Episcopal-Presbyterian Hospitals	Chesterfield	14,100,200
Saint Luke's Health System, Series C	Kansas City	23,280,000
BJC Health Care, Series B	St. Louis	32,000,000
Drury University	Springfield	31,180,000
TOTAL		\$1,666,425,200

2013

INSTITUTION 2013	LOCATION	AMOUNT
Mary Institute & St. Louis Country Day School	St. Louis	\$24,000,000
St. John Vianney High School	St. Louis	5,765,000
Cox Health	Springfield	201,475,000
Higher Education Revenue Anticipation Notes	Statewide	7,500,000
St. Anthony's Medical Center	St. Louis	172,740,000
Stephens College	Columbia	7,970,000
Maryville University	St. Louis	14,995,000
The Barstow School	Kansas City	11,215,000
Advocates for a Healthy Community	Springfield	5,000,000
Bethesda Health Group	St. Louis	75,900,000
University Health	Kansas City	12,000,000
Preferred Family Healthcare	Statewide	9,500,000
BJC Health System, Series A	St. Louis	100,000,000
BJC Health System, Series B	St. Louis	100,000,000
BJC Health System, Series C	St. Louis	100,000,000
University of Health Sciences & Pharmacy in St. Louis	St. Louis	77,215,000
LifeFlight Eagle	Kansas City	6,900,000
University of Central Missouri	Warrensburg	71,735,000
Culver-Stockton College	Canton	3,845,945
Kansas City University of Medicine & Biosciences	Kansas City	25,000,000
TOTAL		\$1,032,755,945

2015

INSTITUTION 2015	LOCATION	AMOUNT
Stowers Institute for Medical Research	Kansas City	290,000,000
Cox Health, Series A	Springfield	126,485,000
Maryville University, Series A	St. Louis	21,015,000
BJC Health Care, Series A	St. Louis	150,000,000
Christian Brothers College High School	St. Louis	26,500,000
St. Luke's Episcopal-Presbyterian Hospitals, Series A	Chesterfield	25,000,000
William Jewell College	Liberty	15,500,000
Missouri State University	Springfield	16,790,000
Maryville University, Series B	St. Louis	15,110,000
Burrell Behavioral Health	Springfield	7,400,000
University of Health Sciences & Pharmacy in St. Louis	St. Louis	12,500,000
Webster University	St. Louis	26,000,000
St. Anthony's Medical Center, Series A,B	St. Louis	101,030,000
Bethesda Health Group	St. Louis	39,345,000
University of Health Sciences & Pharmacy in St. Louis	St. Louis	28,380,000
St. Luke's Episcopal-Presbyterian Hospitals, Series A	Chesterfield	31,870,000
St. Michael the Archangel High School	Lee's Summit	21,090,000
Saint Louis University, Series A,B	St. Louis	97,795,000
Rockhurst University, Series A,B	Kansas City	19,430,000
St. Pius X High School	Kansas City	6,766,000
TOTAL		\$1,078,006,000

2012

INSTITUTION 2012	LOCATION	AMOUNT
Drury University	Springfield	\$33,595,000
St. Louis University High School	St. Louis	4,215,000
University of Central Missouri	Warrensburg	6,945,000
Higher Education - Revenue Anticipation Notes	Statewide	7,000,000
John Burroughs School	St. Louis	20,000,000
SSM Health Care	St. Louis	183,265,000
Forsyth School	St. Louis	4,900,000
Washington University	St. Louis	200,785,000
Saint Luke's Health System	Kansas City	140,000,000
Southwest Baptist University	Bolivar	13,925,000
Heartland Health System	St. Joseph	50,000,000
BJC Health Care	St. Louis	271,000,000
Saint Luke's Health System	Kansas City	50,000,000
Ewing Marion Kauffman School	Kansas City	52,050,000
Lake Regional Health System	Osage Beach	22,275,000
Mercy Health	St. Louis	250,000,000
Freeman Health System	Joplin	35,565,000
TOTAL		\$1,345,520,000

2014

INSTITUTION 2014	LOCATION	AMOUNT
BJC Health System	St. Louis	200,000,000
A.T. Still University of Health Sciences	Kirksville	25,445,000
Mercy Health ABC	St. Louis	350,175,000
SSM Healthcare A-K	St. Louis	868,725,000
EverTrue AB	St. Louis	129,475,000
Mercy Health DE	St. Louis	110,000,000
Preferred Family Healthcare	Statewide	7,094,500
Washington University A	St. Louis	150,000,000
Missouri State University	Springfield	21,485,000
Pembroke Hill School	Kansas City	15,255,000
University of Health Sciences & Pharmacy in St. Louis	St. Louis	12,090,000
Mercy Health F	St. Louis	360,920,000
EverTrue C,D	St. Louis	41,145,000
Missouri Baptist University	St. Louis	36,750,000
TOTAL		\$2,328,559,500

2011

INSTITUTION 2011	LOCATION	AMOUNT
St. Pius X High School	Kansas City	\$5,805,000
Burrell Behavioral Health	Statewide	2,450,000
Rockhurst University	Kansas City	44,645,000
Higher Education Revenue Anticipation Notes	Statewide	10,900,000
Preferred Family Healthcare	Statewide	4,800,000
Avila University	Kansas City	17,600,000
Washington University	St. Louis	196,830,000
Webster University	St. Louis	61,385,000
St. Luke's Episcopal - Presbyterian Hospital	Chesterfield	43,900,000
EverTrue	St. Louis	47,425,000
A.T. Still University of Health Sciences	Kirksville	25,150,000
Mercy Health	St. Louis	376,425,000
State of Missouri - The University of Missouri	Columbia	20,125,000
Capital Region Medical Center	Jefferson City	32,835,000
Ranken Technical College	St. Louis	17,340,000
BJC Health Care	St. Louis	200,000,000
TOTAL		\$1,107,615,000

2024 ANNUAL REPORT – PROJECTS FINANCED

2010

INSTITUTION 2010	LOCATION	AMOUNT
Maryville University	St. Louis	\$15,300,000
Higher Education Revenue Anticipation Notes	Statewide	9,200,000
SSM Health Care	St. Louis	448,620,000
Missouri Baptist University	St. Louis	23,530,000
Saint Luke's Health System	Kansas City	100,000,000
Summit Christian Academy	Lee's Summit	9,385,000
Missouri State University	Springfield	10,220,000
Rockhurst High School	Kansas City	19,965,000
EverTrue	St. Louis	38,300,000
Lake Regional Health System	Osage Beach	27,980,000
Tolton Regional Catholic High School	Columbia	7,075,000
Southeast Missouri State University	Cape Girardeau	59,255,000
Family Care Health Centers	St. Louis	2,255,034
TOTAL		\$771,085,034

2009

INSTITUTION 2009	LOCATION	AMOUNT
Preferred Family Healthcare A	Statewide	\$7,155,000
University of Central Missouri	Warrensburg	20,500,000
Saint Louis Priory School	St. Louis	10,000,000
Higher Education Revenue Anticipation Notes	Statewide	15,700,000
SSM Health Care	St. Louis	30,000,000
Preferred Family Healthcare B	Statewide	1,400,000
The Pembroke Hill School	Kansas City	14,450,000
Missouri School District Advance Funding Program	Statewide	20,195,000
Crider Health Center	Wentzville	6,000,000
The Washington University	St. Louis	93,770,000
Children's Mercy Hospital	Kansas City	181,485,000
Bethesda Health Group	St. Louis	78,270,000
Fontbonne University	St. Louis	13,620,000
TOTAL		\$492,545,000

2008

INSTITUTION 2008	LOCATION	AMOUNT
BJC Health Care	St. Louis	\$368,575,000
Ascension Health	St. Louis	102,050,000
Higher Education Revenue Anticipation Notes	Statewide	6,700,000
SSM Health Care	St. Louis	104,000,000
Mercy Health, Series A, B, C	St. Louis	110,000,000
The Barstow School	Kansas City	10,345,000
Saint Luke's Health System	Kansas City	140,000,000
Children's Mercy Hospital	Kansas City	74,975,000
EverTrue	St. Louis	50,000,000
Saint Louis University	St. Louis	171,815,000
Cox Health	Springfield	267,500,000
The Washington University	St. Louis	193,625,000
Churchill Center and School	St. Louis	5,475,000
Mercy Health, Series D, E, F, G, H	St. Louis	300,000,000
TOTAL		\$1,905,060,000

2007

INSTITUTION 2007	LOCATION	AMOUNT
The Washington University	St. Louis	\$230,995,000
St. Luke's Episcopal - Presbyterian Hospital	Chesterfield	54,210,000
Ranken Technical College	St. Louis	17,325,000
EverTrue	St. Louis	60,500,000
St. Louis University High School	St. Louis	17,885,000
Cox Health	Springfield	5,000,000
Barat Academy	O'Fallon	12,500,000
Higher Education Revenue Anticipation Notes	Statewide	6,235,000
St. Anthony's Medical Center	St. Louis	3,100,000
Children's Mercy Hospital	Kansas City	100,000,000
Lutheran Church Extension Fund (LCEF)	St. Louis	32,650,000
Mother of Good Counsel Home	St. Louis	10,000,000
SSM Health Care	St. Louis	10,000,000
The Pembroke Hill School	Kansas City	6,000,000
LifeFlight Eagle	Clinton	3,105,744
University of Central Missouri	Warrensburg	1,200,000
Missouri School District Advance Funding Program	Statewide	11,115,000
Parkside Meadows	St. Charles	11,000,000
TOTAL		\$592,820,744

2006

INSTITUTION 2006	LOCATION	AMOUNT
Bethesda Health Group	St. Louis	\$9,995,000
University of Health Sciences & Pharmacy in St. Louis	St. Louis	45,755,000
BJC Health Care	St. Louis	243,575,000
Higher Education Revenue Anticipation Notes	Statewide	16,850,000
St. Anthony's Medical Center	St. Louis	70,000,000
SSM Health Care	St. Louis	10,000,000
St. John Vianney High School	St. Louis	3,500,000
Missouri School District Advance Funding Program	Statewide	15,005,000
Saint Louis University	St. Louis	100,950,000
University Health	Kansas City	12,000,000
Churchill Center and School	St. Louis	8,000,000
Rockhurst High School	Kansas City	5,000,000
Maryville University	St. Louis	24,600,000
TOTAL		\$565,230,000

2005

INSTITUTION 2005	LOCATION	AMOUNT
LCEF Series B - Messiah Lutheran School	Weldon Spring	\$6,045,000
The Washington University	St. Louis	20,780,000
BJC Health Care	St. Louis	157,890,000
St. John Vianney High School	St. Louis	5,000,000
Jefferson Regional Medical Center	Crystal City	7,440,000
Higher Education Revenue Anticipation Notes	Statewide	15,295,000
SSM Health Care, Series A, B, C, D	St. Louis	753,900,000
EverTrue, Series A	St. Louis	30,000,000
Saint Louis University	St. Louis	71,600,000
University Health	Kansas City	8,400,000
William Jewell College	Liberty	17,880,000
Missouri School District Advance Funding Program	Statewide	22,850,000
EverTrue, Series B	St. Louis	21,900,000
Kansas City Art Institute	Kansas City	12,000,000
Saint Luke's Health System	Kansas City	100,000,000
St. Anthony's Medical Center	St. Louis	86,600,000
TOTAL		\$1,337,580,000

2004

INSTITUTION 2004	LOCATION	AMOUNT
Mercy Health	St. Louis	127,025,000
Higher Education Revenue Anticipation Notes	Statewide	13,575,000
Saint Luke's Health System	Kansas City	96,990,000
Jefferson Regional Medical Center	Crystal City	37,275,000
Forsyth School	St. Louis	3,800,000
Capital Region Medical Center	Jefferson City	17,500,000
St. Pius X High School	Kansas City	6,200,000
LCEF High School Program, Series A	Statewide	33,140,000
SSM Health Care	St. Louis	10,000,000
Bethesda Health Group	St. Louis	9,995,000
Missouri School District Advance Funding Program	Statewide	54,950,000
The Washington University	St. Louis	100,000,000
TOTAL		\$512,822,244



2024 ANNUAL REPORT – PROJECTS FINANCED

2003

INSTITUTION 2003	LOCATION	AMOUNT
Missouri Baptist University	St. Louis	\$7,420,000
The Washington University	St. Louis	93,430,000
Drury University	Springfield	5,600,000
The Barstow School	Kansas City	6,000,000
Academie Lafayette	Kansas City	2,550,000
The Washington University	St. Louis	25,135,000
John Burroughs School	St. Louis	6,640,000
Ascension Health	St. Louis	295,375,000
Higher Education Revenue Anticipation Notes	Statewide	14,150,000
Children's Mercy Hospital	Kansas City	27,500,000
City Academy	St. Louis	8,735,000
LCEF - Lutheran H.S. of St. Charles County	St. Peters	3,200,000
SSM Health Care	St. Louis	9,747,678
Southwest Baptist University	Bolivar	8,000,000
BJC Health Care	St. Louis	221,000,000
Saint Louis University	St. Louis	20,460,000
Saint Lukes Health System	Kansas City	125,000,000
LifeFlight Eagle	Kansas City	4,400,000
Missouri School District Advance Funding Program	Statewide	96,900,000
Lake Regional Health System	Osage Beach	27,470,000
Ranken Technical College	St. Louis	7,785,000
TOTAL		\$1,016,497,678

2002

INSTITUTION 2002	LOCATION	AMOUNT
Stowers Institute for Medical Research	Kansas City	\$75,000,000
Higher Education Revenue Anticipation Notes	Statewide	18,335,000
Children's Mercy Hospital	Kansas City	50,000,000
Higher Education Revenue Anticipation Notes (Stephens)	Columbia	3,100,000
Lutheran High School Association	St. Louis	6,500,000
SSM Health Care	St. Louis	9,958,188
Cox Health	Springfield	85,000,000
Saint Louis University	St. Louis	24,000,000
SSM Health Care	St. Louis	133,565,000
Living Word Christian School	O'Fallon	4,865,000
Rockhurst High School	Kansas City	5,500,000
Truman Medical Centers	Kansas City	4,087,310
Missouri School District Advance Funding Program	Statewide	52,190,000
Rockhurst University	Kansas City	27,275,000
DeSmet Jesuit High School	St. Louis	15,000,000
St. Louis Charter School	St. Louis	6,130,000
Christian Brothers College (CBC) High School	St. Louis	50,000,000
Missouri State University	Springfield	5,445,000
University of Central Missouri	Warrensburg	14,340,000
TOTAL		\$590,290,498

2001

INSTITUTION 2001	LOCATION	AMOUNT
Family Care Health Centers	St. Louis	\$3,210,000
Webster University	St. Louis	35,000,000
Higher Education Revenue Anticipation Notes	Statewide	27,585,000
Assemblies of God Financial Services Group	Springfield	80,000,000
SSM Health Care	St. Louis	248,570,000
University of Health Sciences & Pharmacy in St. Louis	St. Louis	51,000,000
St. Luke's Episcopal-Presbyterian Hospital	Chesterfield	100,000,000
The Washington University	St. Louis	176,490,000
Mercy Health	St. Louis	378,300,000
The Pembroke Hill School	Kansas City	10,000,000
Hannibal-LaGrange College	Hannibal	7,435,000
Bethesda Health Group	St. Louis	54,385,000
Kansas City University of Medicine and Biosciences	Kansas City	8,305,000
The Washington University	St. Louis	73,355,000
Missouri School District Advance Funding Program	Statewide	48,035,000
Lake Regional Health System	Osage Beach	972,062
Missouri Valley College	Marshall	8,360,000
SSM Health Care	St. Louis	8,853,832
The University of Missouri	Columbia	35,000,000
TOTAL		\$1,354,855,894

2000

INSTITUTION 2000	LOCATION	AMOUNT
Deaconess Long Term Care of Missouri	Statewide	\$6,780,000
The Pembroke Hill School	Kansas City	10,000,000
The Washington University	St. Louis	155,000,000
SSM Health Care	St. Louis	4,290,832
Higher Education Revenue Anticipation Notes	Statewide	24,000,000
Maryville University	St. Louis	15,000,000
The Washington University	St. Louis	9,270,000
Stowers Institute for Medical Research	Kansas City	215,000,000
Missouri School District Advance Funding Program	Statewide	51,440,000
St. Anthony's Medical Center	St. Louis	86,335,000
Dialysis Clinic, Inc.	Statewide	4,000,000
Saint Louis Priory School	St. Louis	6,400,000
EverTrue	St. Louis	50,000,000
TOTAL		\$637,515,832

1999

INSTITUTION 1999	LOCATION	AMOUNT
William Woods University	Fulton	\$8,000,000
National Benevolent Association	St. Louis	2,860,000
Rockhurst University	Kansas City	15,790,000
St. Louis University High School	St. Louis	18,820,000
Higher Education Revenue Anticipation Notes	Statewide	26,300,000
The Visitation Academy	St. Louis	6,300,000
The Washington University	St. Louis	9,135,000
Park University	Parkville	6,000,000
Saint Louis University	St. Louis	67,000,000
Health Care Pooled Finance Program	Statewide	84,000,000
Missouri School District Advance Funding Program	Statewide	38,435,000
Central Institute For The Deaf	St. Louis	25,245,000
Stephens College	Columbia	4,500,000
Kansas City Art Institute	Kansas City	10,000,000
Swope Parkway Health Center	Kansas City	4,500,000
William Jewell College	Liberty	8,000,000
Drury University	Springfield	33,080,000
Lake Regional Health System	Osage Beach	1,341,848
University of Central Missouri	Warrensburg	7,200,000
TOTAL		\$376,506,84

1998

INSTITUTION 1998	LOCATION	AMOUNT
Freeman Health System	Joplin	\$26,285,000
The Washington University	St. Louis	105,770,000
Health Midwest-Park Lane Medical Center	Kansas City	13,900,000
Stowers Institute for Medical Research	Kansas City	125,000,000
Higher Education Revenue Anticipation Notes	Statewide	17,555,000
Southwest Baptist University	Bolivar	7,000,000
SSM Health Care	St. Louis	292,120,000
Missouri Baptist University	St. Louis	3,960,000
Fontbonne University	St. Louis	9,400,000
Rockhurst High School	Kansas City	13,000,000
Truman Medical Centers	Kansas City	3,427,107
Lake Regional Health System	Osage Beach	961,880
Children's Mercy Hospital	Kansas City	20,595,000
Lake Regional Health System	Osage Beach	35,000,000
Saint Louis University	St. Louis	74,997,211
The Pembroke Hill School	Kansas City	15,000,000
Dialysis Clinic, Inc.	Statewide	3,700,000
Heartland Health System	St. Joseph	2,047,620
Missouri School District Advance Funding Program	Statewide	70,800,000
BJC Health Care	St. Louis	225,000,000
The Barstow School	Kansas City	4,000,000
Capital Region Medical Center	Jefferson City	25,000,000
TOTAL		\$1,094,518,818

2024 ANNUAL REPORT – PROJECTS FINANCED

1997

INSTITUTION 1997	LOCATION	AMOUNT
Missouri School District Advance Funding Program	Statewide	\$97,155,000
Direct Deposit Program Refunding Pool	Statewide	860,000
Ranken Technical College	St. Louis	7,265,000
Maryville University	St. Louis	9,815,000
Cox Health	Springfield	46,600,000
EverTrue	St. Louis	25,335,000
Area Rescue Consortium of Hospitals (ARCH)	St. Louis	2,100,000
Higher Education Revenue Anticipation Notes (Drury)	Springfield	3,200,000
TOTAL		\$192,330,000

1996

INSTITUTION 1996	LOCATION	AMOUNT
Saint Louis Priory School	St. Louis	\$5,000,000
The Washington University	St. Louis	142,400,000
Saint Louis University	St. Louis	53,000,000
Missouri State University	Springfield	6,500,000
John Fitzgibbon Memorial Hospital	Marshall	7,270,000
Saint Francis Medical Center	Cape Girardeau	25,000,000
Bethesda Barclay House	St. Louis	12,000,000
Forsyth School, Inc.	St. Louis	1,200,000
National Benevolent Association - Woodhaven Learning Center	Columbia	2,355,000
Lake Regional Health System	Osage Beach	18,025,000
The Community School	St. Louis	1,000,000
Missouri School District Advance Funding Program	Statewide	100,360,000
Drury University	Springfield	12,450,000
EverTrue	St. Louis	35,285,000
William Jewell College	Liberty	6,875,000
Deaconess Long Term Care of Missouri, Inc.	Statewide	35,330,000
Saint Luke's Health System	Kansas City	33,655,000
National Benevolent Assoc.-Lenoir Retirement Community	Columbia	2,720,000
TOTAL		\$500,425,000

1995

INSTITUTION 1995	LOCATION	AMOUNT
Deaconess Health Services	St. Louis	\$13,000,000
SSM Health Care	St. Louis	135,900,000
Missouri School District Advance Funding Program	Statewide	69,825,000
Lake Regional Health System	Osage Beach	588,625
The Washington University	St. Louis	7,600,000
Jefferson Regional Medical Center	Crystal City	17,525,000
University of Central Missouri	Warrensburg	7,000,000
Rockhurst University	Kansas City	8,900,000
Mercy Health	St. Louis	103,645,000
Missouri School District Advance Funding Program	Statewide	5,000,000
TOTAL		\$368,983,625

1994

INSTITUTION 1994	LOCATION	AMOUNT
Park University	Parkville	\$2,200,000
National Benevolent Association - Lenoir Retirement Community	Columbia	5,430,000
John Burroughs School	St. Louis	9,040,000
Freeman Health System	Joplin	57,530,000
Bethesda Health Group	St. Louis	44,795,000
Kansas City University of Medicine and Biosciences	Kansas City	5,565,000
Coordinated Professional Services	Kansas City	2,534,257
Missouri School District Advance Funding Program	Statewide	50,010,000
Health Midwest	Kansas City	42,425,000
St. Louis University High School	St. Louis	15,000,000
BJC Health Care	St. Louis	175,735,000
TOTAL		\$410,264,257

1993

INSTITUTION 1993	LOCATION	AMOUNT
Webster University	St. Louis	\$8,190,000
Skaggs Community Hospital	Branson	7,500,000
Jefferson Regional Medical Center	Crystal City	1,232,437
Heartland Health System	St. Joseph	38,740,000
Kansas City Academy	Kansas City	200,000
Children's Mercy Hospital	Kansas City	35,000,000
Community Provider Pooled Loan Program	Statewide	7,195,000
Mercy Health	St. Louis	9,800,000
Cox Health	Springfield	60,865,000
A.T. Still University of Health Sciences	Kirksville	1,400,000
Saint Louis University	St. Louis	69,390,000
Jefferson Regional Medical Center	Crystal City	20,000,000
Saint Luke's Health System	Kansas City	121,675,000
Equipment and Capital Loan Program	Statewide	80,535,000
Missouri School District Advance Funding Program	Statewide	9,500,000
BJC Health Care	St. Louis	297,880,000
TOTAL		\$769,102,437

1992

INSTITUTION 1992	LOCATION	AMOUNT
Mercy Health	St. Louis	\$33,230,000
BJC-St. Louis Children's Hospital	St. Louis	82,636,014
Capital Region Medical Center	Jefferson City	7,100,000
Missouri School District Advance Funding Program	Statewide	76,110,000
Mercy Health	St. Louis	28,700,000
A.T. Still University of Health Sciences	Kirksville	2,500,000
Cox Health	Springfield	20,347,292
St. Luke's Episcopal-Presbyterian Hospital	Chesterfield	10,575,000
Health Midwest	Kansas City	9,330,000
Health Midwest	Kansas City	143,455,000
Rockhurst University	Kansas City	6,370,000
SSM Health Care	St. Louis	170,420,000
Heartland Health System	St. Joseph	35,000,000
TOTAL		\$625,773,306

1991

INSTITUTION 1991	LOCATION	AMOUNT
Webster University	St. Louis	\$9,900,000
Southeast Missouri Hospital	Cape Girardeau	34,490,000
Saint Luke's Health System	Kansas City	49,415,000
William Jewell College	Liberty	6,500,000
BJC-Christian Health Services	St. Louis	94,210,000
Missouri School District Advance Funding Program	Statewide	70,200,000
Southwest Baptist University	Bolivar	5,175,000
Bethesda Gardens, Inc.	St. Louis	8,925,000
Saint Louis University	St. Louis	24,999,996
BJC-The Jewish Hospital of St. Louis	St. Louis	40,000,000
Anheuser-Busch Eye Institute	St. Louis	23,995,000
Fontbonne University	St. Louis	2,500,000
TOTAL		\$370,309,996

1990

INSTITUTION 1990	LOCATION	AMOUNT
St. Anthony's Medical Center	St. Louis	\$20,000,000
BJC-Missouri Baptist Medical Center	St. Louis	47,308,035
Area Rescue Consortium of Hospitals (ARCH)	St. Louis	5,100,000
BJC-Missouri Baptist Medical Center	St. Louis	20,000,000
Missouri School District Advance Funding Program	Statewide	51,410,000
BJC-Barnes Hospital	St. Louis	77,650,000
SSM Health Care	St. Louis	21,200,000
Missouri School District Advance Funding Program	Statewide	5,000,000
Saint Louis University	St. Louis	2,245,000
SSM Health Care	St. Louis	26,905,000
TOTAL		\$276,818,035

2024 ANNUAL REPORT – PROJECTS FINANCED

1989

INSTITUTION 1989

Saint Louis University
The University of Missouri
The Washington University
Deaconess Health Services
Saint Luke's Health System
Mercy Health
Missouri School District Advance Funding Program
Heartland Health System
St. Anthony's Medical Center
Missouri School District Advance Funding Program
BJC-Christian Health Services
Mercy Health
St. Luke's Episcopal-Presbyterian Hospital
Lake Regional Health System
BJC-Missouri Baptist Medical Center

LOCATION

St. Louis
Columbia
St. Louis
St. Louis
Kansas City
St. Louis
Statewide
St. Joseph
St. Louis
St. Louis
Statewide
St. Louis
St. Louis
Chesterfield
Osage Beach
St. Louis

AMOUNT

\$30,055,383
39,999,569
83,300,000
13,000,000
21,690,000
103,000,000
36,220,000
51,600,000
72,200,000
6,700,000
15,000,000
26,545,000
32,000,000
6,000,000
41,840,000

TOTAL

\$579,149,952

1985

INSTITUTION 1985

Deaconess Health Services
BJC-The Jewish Hospital of St. Louis
Southeast Missouri Hospital
Parkside Meadows
St. Alexius Hospital
Mercy-St. John's Mercy Medical Center
Missouri School District Advance Funding Program
Mercy-St. John's Mercy Medical Center
Mercy-St. John's Regional Health Center
Equipment and Capital Loan Program
BJC-Barnes Hospital
BJC-Christian Health Services
Incarnate Word Hospital
Saint Louis University
Saint Louis University
University of Health Sciences & Pharmacy in St. Louis
Logan College of Chiropractic
St. Luke's Episcopal-Presbyterian Hospital
BJC-Barnes Hospital
The Washington University

LOCATION

St. Louis
St. Louis
Cape Girardeau
St. Charles
St. Louis
St. Louis
Statewide
St. Louis
Springfield
Statewide
St. Louis
St. Louis
St. Louis
St. Louis
St. Louis
St. Louis
Chesterfield
Chesterfield
St. Louis
St. Louis

AMOUNT

\$32,770,000
38,000,000
21,530,000
3,500,000
15,590,000
23,975,000
75,550,000
33,500,000
35,300,000
130,000,000
18,725,000
84,760,000
10,000,000
20,000,000
8,900,000
5,000,000
1,600,000
60,000,000
44,800,000
48,500,000

TOTAL

\$712,000,000

1988

INSTITUTION 1988

Saint Luke's Northland Hospital
Capital Region Medical Center
SSM Health Care
Community Provider Pooled Loan Program
Bethesda Health Group
Missouri School District Advance Funding Program
SSM Health Care

LOCATION

Kansas City
Jefferson City
St. Louis
Statewide
St. Louis
Statewide
St. Louis

AMOUNT

\$10,545,000
5,010,000
136,625,000
8,345,000
15,960,000
26,055,000
65,000,000

TOTAL

\$267,540,000

1984

INSTITUTION 1984

BJC-Christian Health Services
BJC-Barnes Hospital
The Washington University
BJC-Christian Health Services

LOCATION

St. Louis
St. Louis
St. Louis
St. Louis

AMOUNT

\$25,065,000
17,995,000
84,400,000
16,895,000

TOTAL

\$144,355,000

1987

INSTITUTION 1987

BJC-St. Louis Children's Hospital
Cox Health
Capital Region Medical Center
Lake Regional Health System
Deaconess Health Services
Bethesda Health Group
St. Luke's Episcopal-Presbyterian Hospital
John Knox Village
Skaggs Community Hospital
Stephens College
Saint Louis University
Missouri School District Advance Funding Program
BJC-Missouri Baptist Medical Center

LOCATION

St. Louis
Springfield
Jefferson City
Osage Beach
St. Louis
St. Louis
Chesterfield
Lee's Summit
Branson
Columbia
St. Louis
Statewide
St. Louis

AMOUNT

\$67,340,000
122,570,000
9,560,000
7,300,000
48,000,000
16,195,000
56,800,000
12,000,000
5,500,000
5,000,000
33,270,000
13,515,000
39,289,350

TOTAL

\$436,339,350

1983

INSTITUTION 1983

BJC-Christian Health Services
Skaggs Community Hospital
Cox Health
Freeman Health System
Saint Louis University
Bethesda Health Group
Stephens College
Mercy Health

LOCATION

St. Louis
Branson
Springfield
Joplin
St. Louis
St. Louis
Columbia
St. Louis

AMOUNT

\$15,600,000
7,410,000
100,730,000
20,710,000
19,625,000
14,285,000
1,600,000
71,500,000

TOTAL

\$251,460,000

1982

INSTITUTION 1982

Southeast Missouri Hospital
St. Alexius Hospital
Hospital Equipment Financing Program
Mercy Health
Cox Health
A.T. Still University of Health Sciences
Saint Louis University

LOCATION

Cape Girardeau
St. Louis
Statewide
(Stl.) & Springfield
Springfield
Kirkville
St. Louis

AMOUNT

\$19,000,000
15,225,000
29,710,000
50,000,000
47,000,000
4,000,000
10,000,000

TOTAL

\$174,935,000

1986

INSTITUTION 1986

Webster University
Freeman Health System

LOCATION

St. Louis
Joplin

AMOUNT

\$7,600,000
24,900,000

TOTAL

\$32,500,000



1981

INSTITUTION 1981

Trinity Lutheran Hospital
Saint Luke's Northland Hospital
Metropolitan Medical Center
Central Medical Center
Evangel University
Saint Luke's Health System
Incarnate Word Hospital
William Jewell College
The Washington University
BJC-Christian Health Services
Saint Louis University

LOCATION

Kansas City \$25,645,000
Smithville 4,000,000
St. Louis 7,000,000
St. Louis 23,265,000
Springfield 3,300,000
Kansas City 14,800,000
St. Louis 13,500,000
Liberty 2,250,000
St. Louis 60,000,000
St. Louis 23,000,000
St. Louis 16,875,000
TOTAL \$193,635,000

AMOUNT

1979

INSTITUTION 1979

Menorah Medical Center
St. Anthony's Medical Center

LOCATION

Kansas City \$20,000,000
St. Louis 63,100,000
TOTAL \$83,100,000

AMOUNT

1980

INSTITUTION 1980

Heartland Health System
Saint Louis University
A.T. Still University of Health Sciences
The Washington University
Saint Luke's Health System
BJC-St. Louis Children's Hospital
Valley Hope Association
St. Anthony's Medical Center

LOCATION

St. Joseph \$29,415,000
St. Louis 10,245,000
Kirksville 3,000,000
St. Louis 21,550,000
Kansas City 10,000,000
St. Louis 61,800,000
Boonville 795,000
St. Louis 5,000,000
TOTAL \$141,805,000

AMOUNT



HELP! PROGRAM

HELP! Program and School District HELP! Program

CUMULATIVE SUMMARY OF DIRECT LOANS TO SMALL HEALTH AND EDUCATIONAL BORROWERS AND SCHOOL DISTRICTS

Ability K.C.	Kansas City	2023	\$500,000
Advocates for a Healthy Community, Inc.	Hollister, Marshfield, Springfield	2008	\$400,000
Advocates for a Healthy Community, Inc.	Hollister, Marshfield, Springfield	2014	\$400,000
Advocates for a Healthy Community, Inc.	Hollister, Marshfield, Springfield	2017	\$500,000
Advocates for a Healthy Community, Inc.	Hollister, Marshfield, Springfield	2021	\$500,000
Ava R-1 School District of Douglas County	Ava	2015	\$400,000
Campbell Montessori School	St. Charles	1997	\$200,000
Central Methodist College	Fayette	1999	\$200,000
Centralia R-6 S.D. of Boone County	Centralia	2012	\$280,000
Chilhowee R-4 School District of Johnson Co.	Chilhowee	2017	\$500,000
Citizens Memorial Healthcare	Bolivar	2009	\$400,000
Clayton Academy	St. Louis	1996	\$200,000
Community Hospital Association	Fairfax	1997	\$200,000
Community Hospital Association	Fairfax	2001	\$200,000
Community Hospital Association	Fairfax	2003	\$200,000
Family Health Center	Boonville, Columbia, Salisbury	2011	\$145,625
Family Health Center	Boonville, Columbia, Salisbury	2012	\$250,000
Family Health Center	Boonville, Columbia, Salisbury	2016	\$400,000
Fayette R-3 School District of Howard County	Fayette	2023	\$191,295
Forest Institute of Professional Psychology	Springfield	2008	\$240,000
Halfway R-3 School District of Polk County	Halfway	2024	\$500,000
I-70 Community Hospital	Sweet Springs	2005	\$200,000
Katy Trail Community Health	Sedalia and Versailles	2008	\$280,000
Katy Trail Community Health	Sedalia and Versailles	2015	\$400,000
Katy Trail Community Health	Sadalia and Versailles	2022	\$500,000
Katy Trail Community Health	Sadalia and Versailles	2023	\$500,000
Kemper Military School and College	Boonville	1996	\$200,000
LaPlata R-2 S.D. of Macon County	LaPlata	2007	\$400,000
Lathrop R-2 S.D. of Clinton County	Lathrop	2013	\$208,000
Lathrop R-2 S.D. of Clinton County	Lathrop	2023	\$500,000
Linn R-2 School District of Osage County	Linn	2023	\$500,000
Macks Creek R-5 School District of Camden County	Macks Creek	2024	\$287,462
Macon County Samaritan Memorial Hospital	Macon	1996	\$200,000
Malta Bend R-5 School District	Malta Bend	2022	\$76,557
Marion C. Early R-5 S.D. of Polk County	Morrisville	2014	\$400,000
Maysville R-1 S.D. of DeKalb County	Maysville	2012	\$300,000

Mexico #59 S.D. of Audrain County	Mexico	2009	\$400,000
Miami R-1 S.D. of Saline County	Miami	2012	\$250,000
Miriam School & Foundation	St. Louis	2010	\$600,000
Missouri Valley College	Marshall	2021	\$500,000
Missouri Valley College	Marshall	2023	\$600,000
Montrose R-14 School District of Henry County	Montrose	2023	\$300,000
Montrose R-14 School District of Henry County	Montrose	2024	\$154,260
Mountain Grove R-3 School District of Wright County	Mountain Grove	2024	\$500,000
Nodaway-Holt R-7 S.D., Nodaway and Holt Co.	Graham	2010	\$75,557
North Central Missouri College	Trenton	1997	\$150,000
Northeast Missouri Health Council, Inc.	Kirksville, NE Missouri	1996	\$162,000
Northeast Missouri Health Council, Inc.	Kirksville, NE Missouri	2002	\$200,000
Northeast Missouri Health Council, Inc.	Kirksville, NE Missouri	2019	\$500,000
Northwest Health Services, Inc.	St. Joseph, NW Missouri	1996	\$168,639
Northwest Health Services, Inc.	St. Joseph, NW Missouri	2002	\$150,000
Northwest Health Services, Inc.	St. Joseph, NW Missouri	2004	\$200,000
Ozarks Community Health Center	Hermitage	2014	\$315,000
Preferred Family Healthcare	Statewide	2000	\$200,000
Putnam County Memorial Hospital	Unionville	1997	\$200,000
Rich Hill R-4 S.D. of Bates County	Rich Hill	2013	\$84,296
Sherwood Autism Center	Kansas City	2019	\$500,000
Sherwood Cass R-8 S.D. of Cass County	Creighton	2013	\$400,000
Sherwood Cass R-8 S.D. of Cass County	Creighton	2021	\$365,272
Steelville R-3 S.D. of Crawford County	Steelville	2008	\$400,000
Stephens College	Columbia	2021	\$500,000
Swope Health Services	Kansas City	2019	\$500,000
Walnut Grove R-5 S.D. of Greene County	Walnut Grove	2020	\$500,000
Western Johnson Co. Health Clinic	Kingsville	2008	\$400,000
Willard R-2 S.D. of Greene County	Willard	2012	\$400,000
YMCA of Great Kansas City	Kansas City	2018	\$500,000

66 Loans

\$21,933,963





15450 South Outer Forty Road, Suite 230,
Chesterfield, MO 63017 • P: 636.519.0700

www.mohefa.org